

Risc IT Solutions backup and recovery for desktops, laptops and servers

Enable automatic backups and anywhere, anytime recovery with Risc IT Solutions Backup. With disk-to-disk solutions available for Windows, Mac and Linux operating systems;

Our Backup provides private and business users with cutting-edge, simple, reliable and secure data protection. Using an Attix5 Pro solution, you can back up critical data from workstations and servers, across physical and virtual platforms, to a secure off-site or local data centre, while giving backup administrators full control of all processes via a single console.

Automatic backup scheduling eliminates risk

Up-to-the-minute backup schedules enable automatic and regular backups without user intervention, eliminating the highest risk posed to the backup process — human error.

Intelligent file inclusion and exclusion

Control which files and folders are backed up and restored using a range of selection tools. These include filters and profiling features that enable administrators to enforce backup selections. Controlled backup selection facilitates rapid, transparent backups, even over low-speed connections.

Fully scalable, grows with your business

Flexible architecture provides you with multiple deployment options and caters for multiple workstation specifications and operating systems, enabling the solution to grow with your business or personal network environment.

Anywhere, anytime recovery

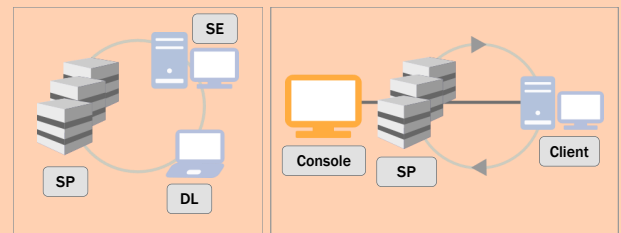
Recover critical data in seconds from the user's workstation or remotely. Clients can select data to restore and data to exclude from the restore process, and then initiate recovery themselves, without the need for technical assistance.

KEY FEATURES

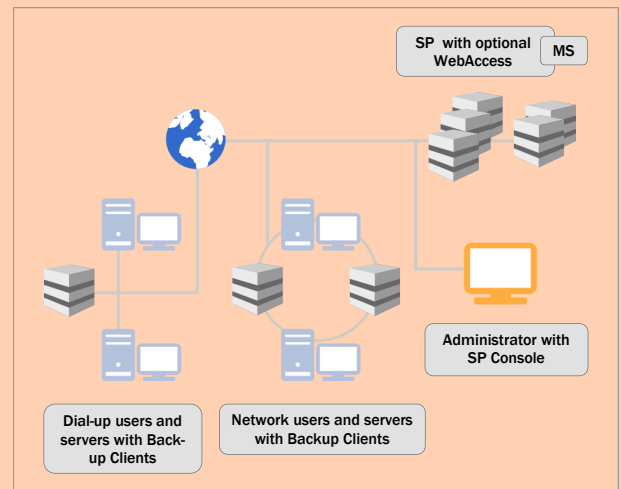
- Automatic backup scheduling
Eliminate the risk of human error by automating the entire backup process using our up-to-the-minute backup scheduling feature.
- Scalable and flexible
One to thousands of workstations and/or servers running different operating systems can be backed up to a central off-site or local data centre (Storage Platform) and managed via a single console.
- Data de-duplication
Duplicate files are eliminated on the fly across all Backup Accounts, saving bandwidth and storage space.

HOW IT WORKS

Files and folders stored on desktop PCs, laptop computers or servers running Desktop & Laptop Edition (DL) or Server Edition (SE) can be backed up to a Storage Platform (SP). In the event of data loss or corruption, you can retrieve data from the Storage Platform and restore it to the original or another computer in just a few easy steps.



Scales seamlessly to accommodate anything from one to thousands of workstations and servers; protecting data across physical platforms, virtual environments and geographic locations and enabling central management via a single console. The possible network scenarios are endless but the flexibility of these component-based solutions makes full protection of all your digital data not only possible but efficient.



RISC IT SOLUTIONS
DATA PROTECTION.
SIMPLE. RELIABLE. SECURE.

- Intelligent file selection
Use filters, profiling and file-level inclusion and exclusion to specify data to back up/restore and data to ignore.
- Central administration
A single management console enables backup administrators to control backup and restore processes and configure all Backup Clients remotely.
- Client user self-restores
Backup Client users can restore data directly to their workstations, without the need for technical support.
- Streaming Backup
SE users have access to Streaming Backup, which is extremely fast and uses very little disk space.

Risc IT Solutions Backup feature highlights

Backup options	DL	SE
Dynamic and manual data selection	✓	✓
Off-site storage support	✓	✓
Once-off daily and advanced backup schedules	✓	✓
Pre-backup compression/patching	✓	✓
Backup throttle	✓	✓
Snapshot backups and restores	✓	✓
Command-line interface (CLI) control	✓	✓
Microsoft Volume Shadow Copy Service (VSS) support (open file backups)*	✓	✓
Backup Client Over Limit notifications	✓	✓
Client advertising banner	✓	
Multiple Backup Sets (including separate data selections and schedules)		✓
NTFS Change Journal support*		✓
Delta Blocking		✓
Streaming Backup		✓

* Only available in Windows versions

Restore options	DL	SE
Full backup set or selective data recovery	✓	✓
File search — available locally and remotely	✓	✓
Alternative destination restore	✓	✓
Recreate directory structure	✓	✓
Overwrite files	✓	✓
File and folder permission restore		✓
Faster target location restores		✓

Storage, speed and bandwidth optimisation	DL	SE
Source and target-based data de-duplication	✓	✓
Data compression (in transit and storage)	✓	✓
Backup resumes	✓	✓
Run backups in background*	✓	✓

* Only available for Windows 7/8/8.1 and Windows Server 2008/2012 operating systems

Other	DL	SE
Central administration		
Client installation customisation and settings lock down		
Network detection		
Nested Backup Groups and Collections with multi-tier access control and permissions		
Account limit and overspill control		
Account expiry control and notifications		
Automatic Backup Client upgrades		
Dynamic Profiling		
Remote Management		
Month-end backup retention control		
Retries and timeouts		
Reports (Standard, Enterprise and customisable)		
SSL protocol encrypted network communications		
256-bit Advanced Encryption Standard (AES)		
Backup Client and Web Access user authentication and reporting		
Adjustable Backup Client user permissions		
Integrity Checks (Stored data validations)		
Web Client interface with briefcase and email options		

SUPPORTED OPERATING SYSTEMS

Desktop & Laptop Edition

- Windows 8/8.1
- Windows 7
- Windows Vista
- Windows XP (SP3)
- MAC OS X (10.8—10.9)

Server Edition

- Windows Server 2012 (incl. R2)
- Windows Server 2008 (incl. R2)
- Incl. Small Business Server bundles
- 32/64-bit OS support
- Windows Server 2003
- Incl. Small Business Server bundles
- 32/64-bit OS support
- Red Hat Linux
- Fedora (18—20)
- Ubuntu 12.04 LTS
- Solaris SPARC 10
- MAC OS X (10.8—10.9)

SERVER EDITION PLUG-INS

Microsoft-related

- MS SQL Server 2005 | 2008 | 2012
- MS VSS
(Supports MS Exchange 2003 | 2007 | 2010 and SQL 2005 | 2008 | 2012 [Please note: This plug-in does not support System State. A dedicated System State plug-in is available.])
- System State (Supports Windows Server 2003 | 2008 [incl. R2] | 2012)

Additional

- Email Notification
- Script



CONTACT US

Call: 01492 862780
 Email: information@riscsolutions.com
 Visit: www.riscsolutions.com